



PALS COMEDY NIGHT - SATURDAY 18TH NOVEMBER 2023

WELCOME

This weekend it is all go with our Comedy Night (further information below). Please come along and support this if you can. Next week the fun

just continues for our kids when the mobile ice skating rink is being set up. This will be awesome for our school and give the kids a unique and exciting experience. Stay tuned.

HAVE A FUN NIGHT OUT AND SUPPORT OUR SCHOOL!

We are hosting a stand-up comedy night this Saturday 18 November. Comedians from around NZ will be on stage, so you're guaranteed a laugh! Tickets include a complimentary supper, plus we have a bar running too.

It will be a great night out, so grab your friends and whānau and buy some tickets. Funds raised are going towards a brand new turf for our school.

Not only that, but we will have some great auctions on the night to be won, including:

- a weekend in Ohakune
- a load of firewood
- kids' picnic table

... and some fantastic raffle prizes too, jewellery and cosmetics, a ride on the Waimarie, term fees for gymnastics, homewares, Norwex, vouchers for dinner and movies.

We need your support to make this night a success; tickets are available online or from the office.

CAMP RAUKAWA

This week Rooms 14, 15 and 23 have embarked on camp and what an awesome experience they have had. The weather, whilst a little bit windy, stayed fine and allowed the kids to have a crack at all the activities. It has been awesome to see kids have such a fun time, challenge themselves, and enjoy some amazing kai. A massive thank you to all our whānau who have come along and made these camps possible. Be sure to have a chat with your kids and find out what their favourite parts have been, for me seeing bombs in that lake was impressive!

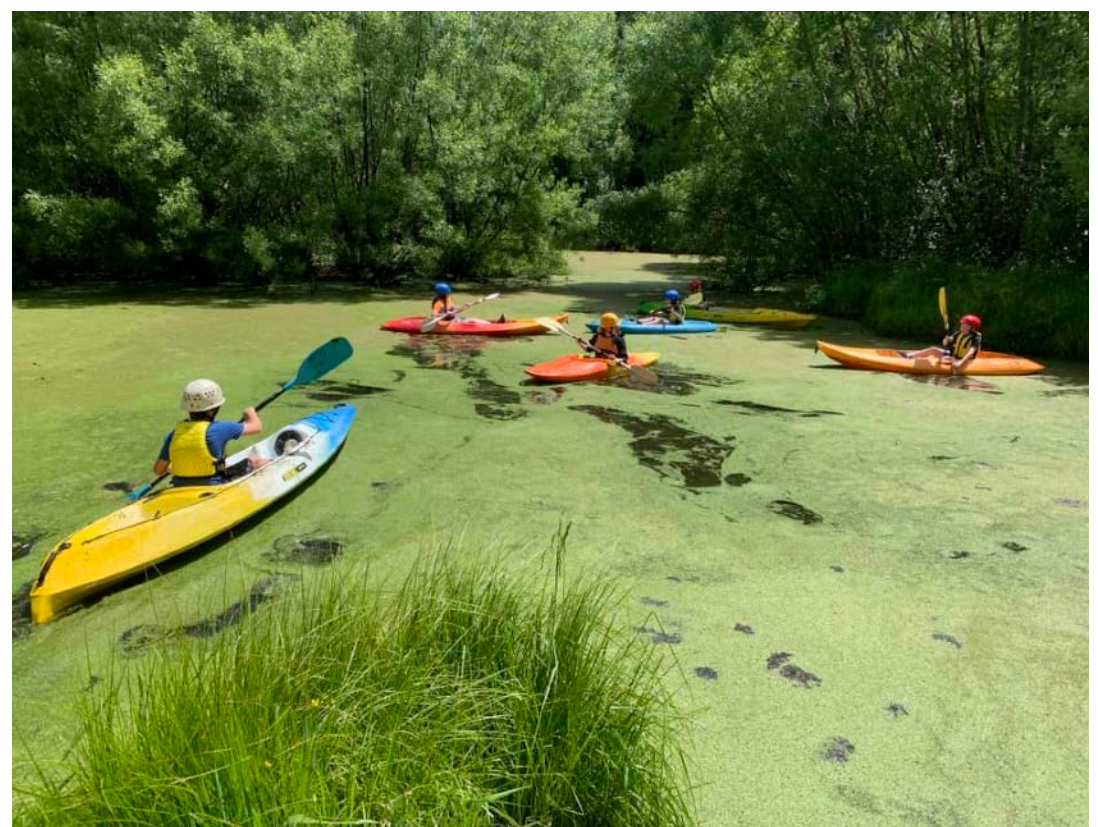
DIY COMEDY PRESENTS
A ONE NIGHT STAND

MC - AMBERLY CALDWELL
SAM SMITH
CHRIS INGHAM
LUKE TAWI
AUNTIE LIANNE

LYTTON STREET SCHOOL
SATURDAY 18 NOVEMBER @ 7:00PM
\$30 ADV \$40 DOOR
BAR AVAILABLE - SUPPER PROVIDED
Get tickets on KiwiTicket

Manawatu District creative COMMUNITIES nz

SCAN HERE



36/23

Thursday 16th November 2023

TE AO MĀORI AT LSS

What is whaikōrero? Whaikōrero (formal speeches) is a taonga of immense mana so it must be regarded with respect and dignity. It is something that is carried not by just one or two on the paepae kōrero (the speakers bench) but by the hapū and iwi. The mana of the people is influenced by the strength of the paepae and its speakers. To be the spokesperson of the iwi carries responsibilities to do it to the best of one's ability. Being the face of the people and expressing their thoughts and ideas is not a frivolous task. Respect, care and aroha are vital if the iwi is to be represented well. The whaikōrero are usually done by male elders representing the tangata whenua and manuhiri respectively. In some iwi or hapū women may also whaikōrero. However, this is not the case here in our area. In some informal settings, women are enabled the opportunity to address a gathering.

Whaikōrero means to literally, follow the kōrero. This is following the thread/themes, ideas that are expressed and adding, embellishing, analysing, interpreting, renewing, changing and expanding upon what the previous speaker has said. It is not about introducing new kaupapa or topics but rather to whai i te kōrero (follow) the speaker who spoke before you.

Each term we celebrate our new whānau with a whakatau (welcome) where we are able to see and hear whaikōrero in action. This is an opportunity for whānau members to share their skills and knowledge of whaikōrero with our school, and we always welcome whānau to attend and take on this respectful role. Many times we have had staff members take on this role, and we are always very proud of those who choose to represent either LSS, or the new whānau arriving.

TE MANAWANUI KI TE REO 2023 WHĀNAU HUI

We are seeking feedback from whānau to support us to continue developing and growing our relationships and engagement with Māori learners, their whānau and iwi. A survey to all current Te Manawanui whānau has been sent out via class Seesaws and on Thursday the 30th of November at 6pm, we will be holding a whānau hui to feedback on these responses and to share plans for 2024. If you would like the link to our survey via email, or would prefer a paper copy, please contact the school office. Nau mai haere mai, tautoko mai rā.

CLASSING FOR 2024

A big thank you to all our whānau who have offered advice and/or requests for their child's classroom placement in 2024. Unfortunately, we are no longer able to accept requests as the classing process is now underway. Classing is a complex task as we always aim to ensure all our students are successfully catered for, both with teachers that they connect well with and friendships. Once again thank you so much for your support and we are all looking forward to another fantastic year at Lytton Street School.

THE GREAT LSS CHRISTMAS DROP

Our school would like to once again provide a \$5 gift for each child to be given out in the last week of Term 4. In order to make this happen we need support from the local Feilding community. If you, a local business, or anyone you know would be able to provide some financial support or sponsorship, this would be much appreciated. Please email me at principal@lyttonstreet.school.nz or ring or text me on 021 525 410 and our office will contact you shortly. Any sponsorship will be acknowledged in our school newsletter and on Facebook.






FEILDING CHRISTMAS Carnival & Parade

SUNDAY 10 DECEMBER 2023, 10AM - 4.00PM

12.30PM
NEW START
TIME FOR
THE
PARADE

REGISTER
YOUR FLOAT
NOW!!
What will you create
this year??

See you at Manawatū's biggest Christmas Carnival - ALL DAY SUNDAY, 10th December from 10am to 4pm!

With a new Parade start time of 12.30pm, there will be plenty of time to do your Christmas shopping and enjoy all the entertainment and amusements before and after the parade - with the carnival festivities all open until 4.00pm!

Local retailers will be open and the town centre filled with over 100 market stalls, plus loads of amusements, live entertainment, merry go rounds, bouncy castles, Christmas carols and much more festive fun to keep the kids entertained while you shop!

FREE BUSES will be available from Palmerston North and on the orbiter around Feilding all day.

Plus there is more! We want to give a little back this Christmas. Go in the draw to **WIN one of 10 Christmas Hampers** valued at \$200.00 each. Entry form and details on www.feilding.co.nz.

ATTN: Local clubs, groups, schools, churches and business
 It's time to think about sharing the Christmas Joy with your community... Haul out the tinsel and baubles and start thinking about your float and what you will create to be part of Feilding's Manchester Lions Christmas Parade. Help bring the Christmas magic, weaving joy and excitement for our community, family and whānau. Float Registrations close - 24 November.

Head into Feilding's town centre for a very Merry Christmas - **ALL DAY SUNDAY** 10 December, from 10am - 4pm.

UPDATES & FULL DETAILS:
WWW.FEILDING.CO.NZ

